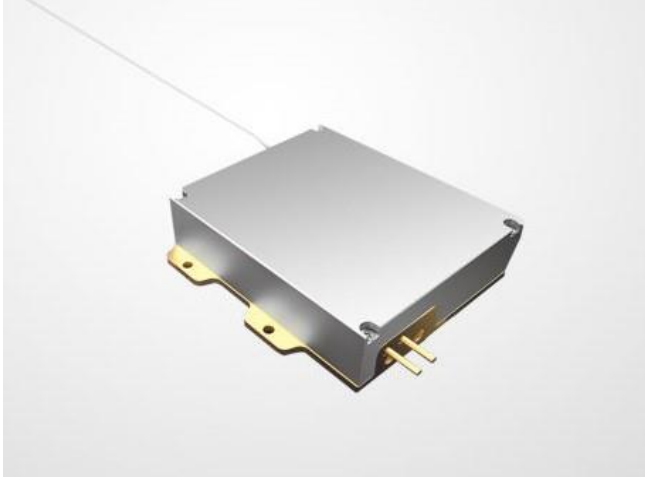


976nm 140W Wavelength-Stabilized High Brightness Fiber Coupled Diode Laser K976BN1RN-140.0W (Optional Product)

**Features:**

- ◆ 976nm wavelength
- ◆ 140W output power
- ◆ 106.5 μ m fiber core diameter
- ◆ 0.22NA
- ◆ 1040nm~1200nm feedback protection

Applications:

- ◆ Fiber laser pumping

BWT Beijing's High Power Diode Laser Modules are manufactured by adopting specialized fiber-coupling techniques, resulting in volume products with a high efficiency, stability and superior beam quality. The products are achieved by transforming the asymmetric radiation from the laser diode chip into an output fiber with small core diameter by using special micro optics. Inspecting and burn-in procedures in every aspect come to a result to guarantee each product with the reliability, stability and long lifetime.

Our research staffs are constantly improving and innovating the processing technology in the producing process, based on the professional knowledge and experience accumulated in long-terms. We are also continuously developing new products to meet customers' specific needs.

At BWT Beijing, to provide high quality products with reasonable price is always our goal.

976nm 140W Wavelength-Stabilized High Brightness Fiber Coupled Diode Laser K976BN1RN-140.0W (Optional Product)

Specifications(25°C)		Symbol	Unit	K976BN1RN-140.0W		
				Minimum	Typical	Maximum
Optical Data	CW-Output Power ⁽¹⁾	P _o	W	140	-	-
	Center Wavelength	λ _c	nm	976±1		
	Spectral Width (FWHM)	Δλ	nm	< 1		
	Wavelength Locked range ⁽²⁾	-	Å	(I _{op-2}) ~ I _{op}		
	Wavelength Shift with Temperature	Δλ/ΔT	nm/°C	-	0.02	-
	Wavelength Shift with Current	Δλ/ΔA	nm/A	-	0.03	-
Electrical Data	Electrical-to-Optical Efficiency	PE	%	-	45	-
	Operating Current	I _{op}	A	-	13.2	14
	Threshold Current	I _{th}	A	-	0.9	-
	Operating Voltage	V _{op}	V	-	22.4	23.8
	Slope Efficiency	η	W/A	-	11	-
Fiber Data	Core Diameter	D _{core}	μm	-	106.5	-
	Cladding Diameter	D _{clad}	μm	-	125	-
	Numerical Aperture	NA	-	-	0.22	-
	Total Fiber Length	L _f	m	-	2	-
	Fiber Loose Tubing Diameter/Length	-	mm	0.9mmPTFE/180cm		
	Minimum Bending Radius	-	mm	50	-	-
	Fiber Termination	-	-	-	None	-
Feedback Isolation	Wavelength Range	λ	nm	1040~1200		
	Isolation	-	dB	-	30	-
Others	ESD	V _{esd}	V	-	-	500
	Storage Temperature ⁽³⁾	T _{st}	°C	-20	-	70
	Lead Soldering Temp	T _{ls}	°C	-	-	260
	Lead Soldering Time	t	sec	-	-	10
	Operating Case Temperature ⁽⁴⁾	T _{op}	°C	25	-	30
	Relative Humidity	RH	%	15	-	75

(1) Data measured under operation output at 140W@25°C.

(2) Wavelength stabilized to >90 % power in band of 975 nm to 977 nm

(3) A non-condensing environment is required for operation and storage.

(4) Operating temperature defined by the package case. Acceptable operating range is 25°C~30°C, but performance may vary.

